

Pen-sized Electronic Pipettor

pipetty®

For all of pipette users
pipetty support your daily operation



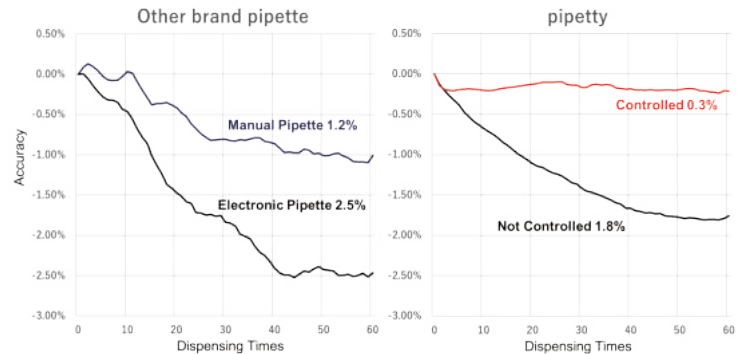
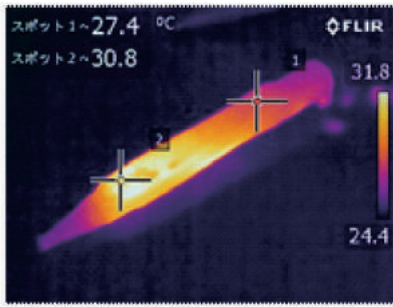
1. Small/Light/Pen-type Grip(Patented)
2. High accurate multiple dispensing
3. Automatical dispensing
volume compensation

Specification

Product No.	MSIC01-02-20	MSIC01-02-250	MSIC01-02-1000	
Range of dispensing	0.1–20µl	1–250µl	5–1000µl	
Accuracy assurance range	2–20µl	20–250µl	100–1000µl	
Single Dispensing	Repeatability (CV)	20µl ≤ 0.4% 2µl ≤ 2.0%	250µl ≤ 0.15% 20µl ≤ 0.8%	1000µl ≤ 0.15% 100µl ≤ 0.5%
	Accuracy	20µl ± 1.0% 2µl ± 3.5%	250µl ± 0.5% 20µl ± 2.5%	1000µl ± 0.5% 100µl ± 1.5%
Multiple Dispensing	Repeatability (CV)	2µl ≤ 3.5%	20µl ≤ 2.0%	100µl ≤ 1.5%
	Accuracy	2µl ± 5.0%	20µl ± 3.0%	100µl ± 2.0%
Outside dimension	20 × 54 × 184	20 × 54 × 181	20 × 54 × 181	
Weight	Approximately 75g (including battery)			
Power	AAA battery (Ni-MH/Rechargeable)			
Attachable tip	WATSON, GILSON, Eppendorf, Greiner Bio-One, Thermo Fisher Scientific, RAININ, Compatible with other brand general tips ※Recommend tips: Thermo Fisher Scientific (ART Tips, Finn Tips)			

Feature① High accurate dispensing against “Hand Warming”!

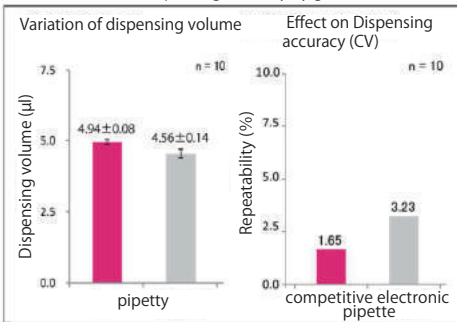
Both of manual and electronic pipettes have the problem of “Hand Warming,” that effect to dispensing accuracy, due to hand heat is transmitted inside of syringe. As a result of measuring how much hand heat effects to the accuracy, the temperature outside of pipette rose 5.8 °C in about 20 minutes, and the dispensing accuracy changed 1.8%. “pipetty” have installed thermal sensor and is the only pipette in the world that automatically compensate the dispensing volume according to the temperature.



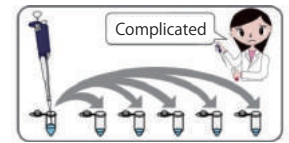
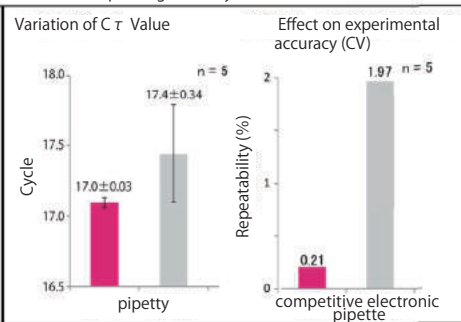
Feature② Dispensing Accuracy

Compared the dispensing accuracy between “pipetty” and competitive electronic pipette by gravimetric method, and also verified how effect to RT-PCR results. As shown in the verification results below, having higher dispensing accuracy “pipetty” is more suitable for quantitative measurement experiments.

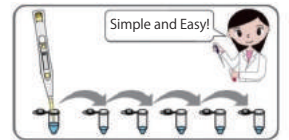
◎Measurement of dispensing accuracy by gravimetric method



◎Effect of dispensing accuracy on RT-PCR results



Manual pipette
⇒It takes time for one by one dispensing



Electronic pipette
⇒It can dispense continuously and save time

Vision Care Inc. President : Masayo Takahashi

The traditional pipette work needs craftsmanship, and there is a problem that the accuracy of dispensing varies depending on the technique of the researcher. The accuracy of the dispensing is greatly related to the reproducibility of the experiment, and may be related to future regenerative medicine. “pipetty” can be aspirated and dispensed by just set volume and single push of a button, and it is attractive that anyone can perform dispensing operations with high accuracy. I think it is a necessary item for experimentation that requires reproducibility.



Manufacturer

 **Icomes Lab Co., Ltd.**
gear change your life

2-4-23, Kitaiioka, Morioka-shi, Iwate 020-0857, Japan

TEL : +81-19-601-8228 FAX : +81-19-601-8227

Mail : globalinfo@icomes.co.jp URL : <https://www.icomes.co.jp/>

Distributor